



Data visualization technology (dashboards with charts, maps and drilldowns) will modernize your reporting process but dashboard set-up doesn't need to be difficult and expensive.

**WHAT DOES IT DO?**

B1 Dashboard enables you to create a customized, detailed, fact-based view of your organization's activities and performance to facilitate mission-critical decision-making.

Every day, the amount of data produced by your company continues to grow.

Dashboards provide a central location for users to access, interact and analyze up-to-date information so they can make smarter, data-driven decisions.

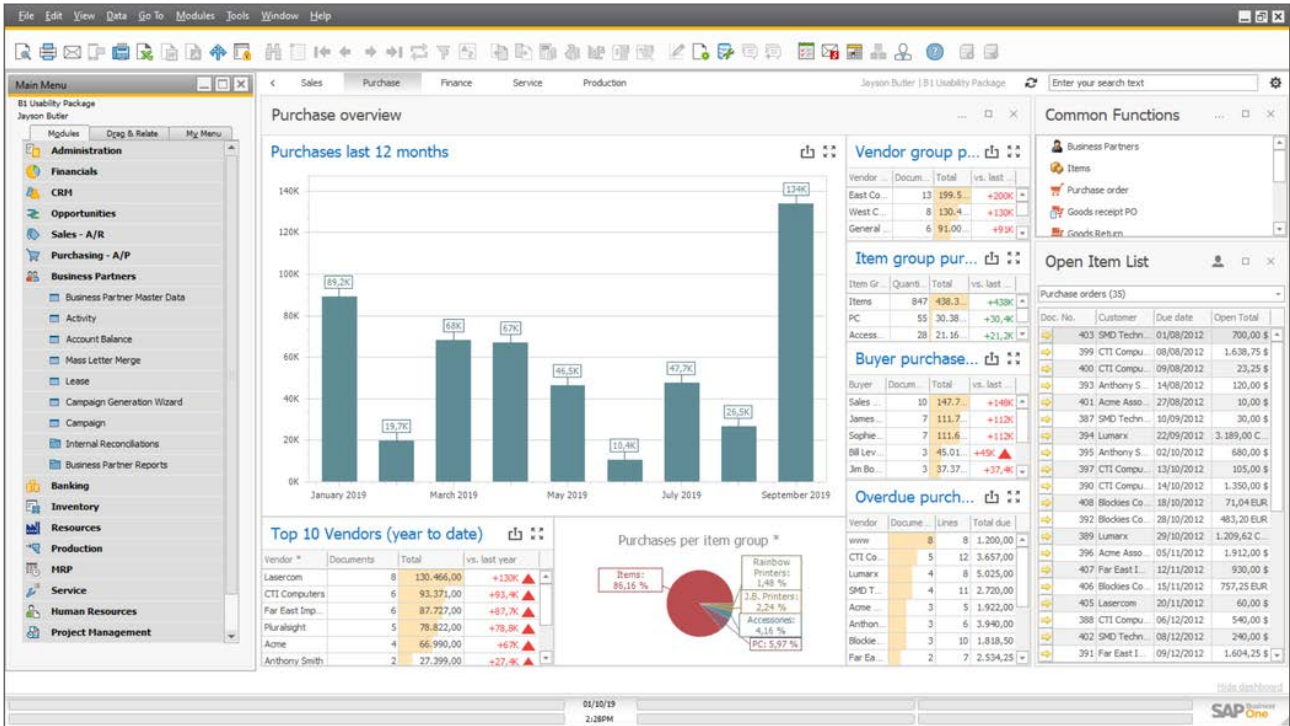
Data is the key to your organization's most important asset: **information**. Information about your customers, your business performance and information about your organizational effectiveness.

Good dashboard software enables you to monitor and measure performance and metrics in realtime and on the go.

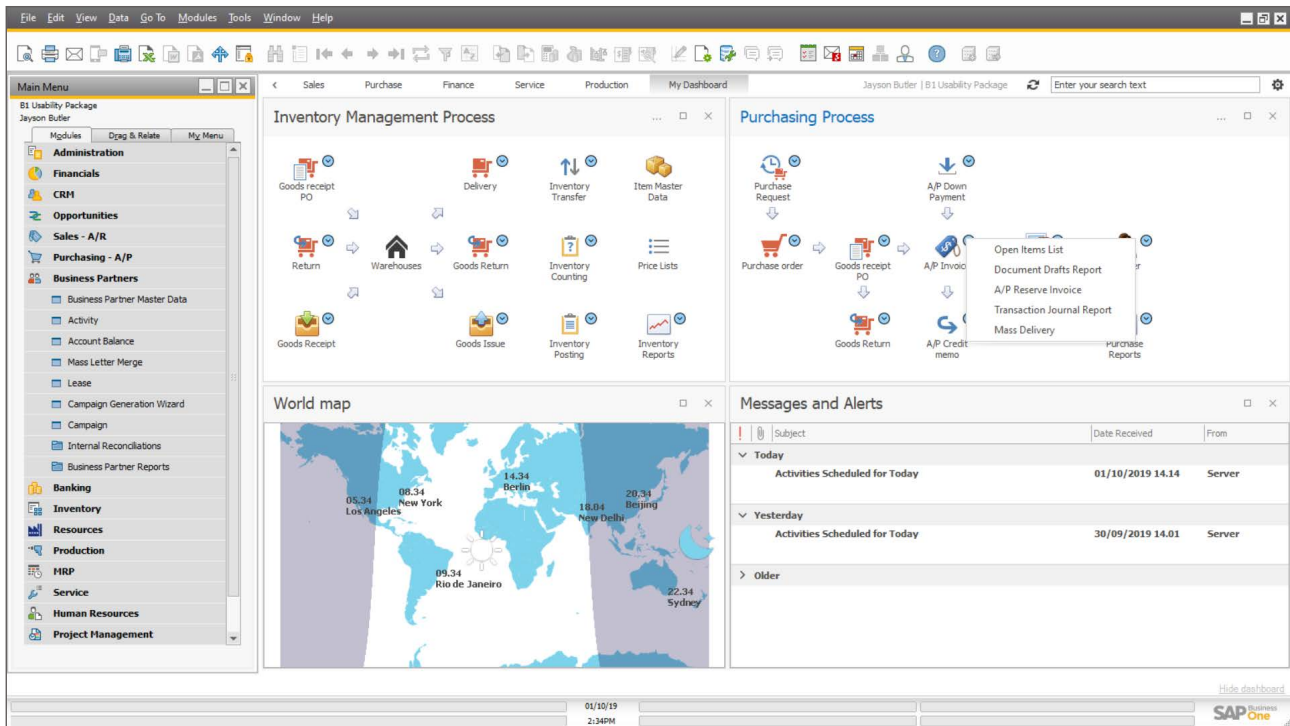
**B1 Dashboard** functionality allows you to see your data the way you want to see it, arming you with the knowledge you need to confidently make your biggest business decisions.

You can visualize and analyze data and focus on Key Performance Indicators (KPIs) from across the organization on a dashboard, helping you gain valuable insight and drive quick and accurate decision making.

Go to our **B1 Dashboard playlist** to learn more...



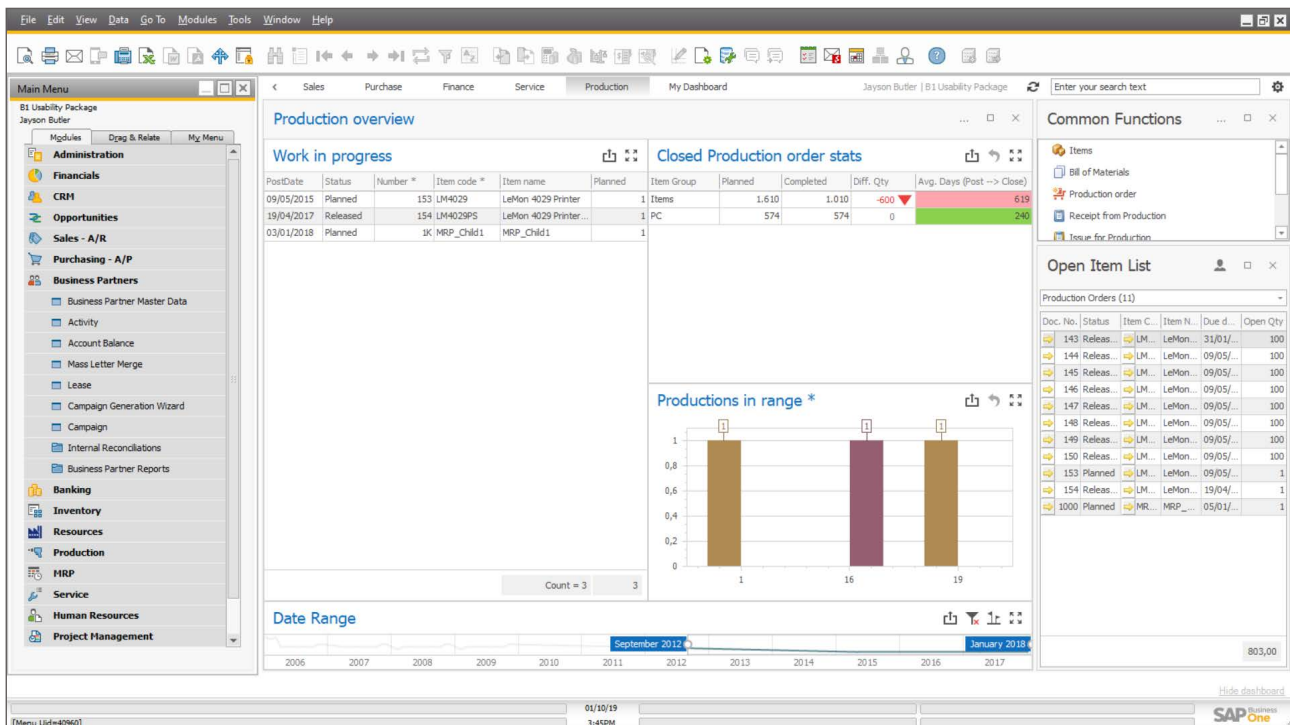
## BI DASHBOARD - PART OF THE B1 USABILITY PACKAGE



Interactive, secure dashboards provide you the information you need. You can create any additional dashboards by writing your own SQL reports.

It is possible to connect to any Microsoft SQL server with the B1 Dashboard.

B1 Dashboard now works on HANA and can be seen from any desktop browser!



Contact Boyum IT for more information on how to get started with B1 Dashboard.